

Improve Your Control Over Document Production and Printing

StreamServe Post-Processing: A Better Solution for High-Volume, Multi-Stream Document Production

Post-Processing helps organizations of all sizes improve the way they manage their document-production processes. Post-Processing delivers complete control by enabling business users to apply logic and operations data to any type of formatted pages before the final output stage. Post-Processing helps to compile data from multiple sources, and organizes and manages all steps of the document-delivery phase, including document collation, bundling, sorting, enveloping and print layout.

With full support of all of these production-printing requirements, Post-Processing can help your organization:

- Organize documents into envelopes while minimizing the number of envelopes sent to each recipient
- Sort documents and envelopes to meet postal criteria
- Split large jobs into multiple files
- Provide reports on printed jobs for tracking and accounting purposes
- Take advantage of advanced layout features (such as printing multiple pages on the same sheet) to maximize the printers' capabilities



How Post-Processing Works

Post-Processing groups related documents into a staging environment, where all of the interim document steps can be tracked until the documents are released for printing or electronic distribution. Production managers can manually release documents, or they can even schedule them for a particular time or event. Once documents are in Post-Processing, they are stored for future editing, customization, sequencing, bundling, enveloping, or sorting before distribution via print, fax, or other delivery channel. For example, in a distribution environment, Post-Processing consolidates and prints delivery information, sorted by driver and the most efficient route.

With Post-Processing, organizations significantly reduce the number of manual steps and errors once associated with generating critical

business documents. They can also reduce costs—by optimizing print jobs, negotiating better rates with print shops, reducing the amount of manual handling, and co-enveloping for reduced postal costs.

Post-Processing also adds control information and enveloping data such as OMR marks, labels and printing instructions. It can even be used for print layout by adding pre-determined overlays or altering the sequencing or structuring used to print the end document, such as a four-page folded brochure that requires specific print layouts on each page.

"We print 10 million pages per year. By cutting the volume of enveloped and mailed printed editions by 40% to 50%, we have realized a return on investment for the StreamServe solution in less than one year."

*Ghislain Pineau, Head of the Web, DTP, and Tools Program
Eurofactor Information Systems*

Post-Processing in Action

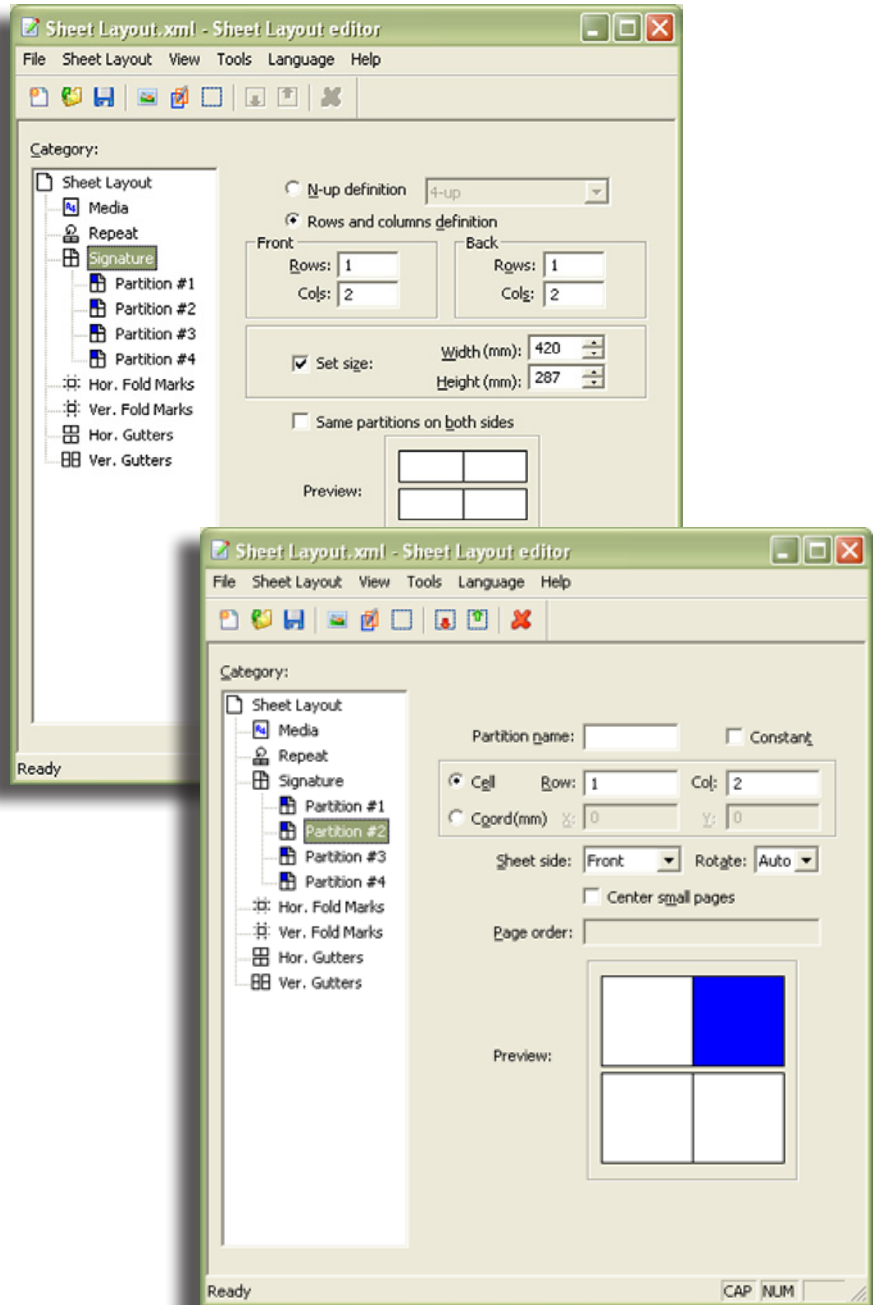
One of the world's leading manufacturers has been able to eliminate more than 90% of the manual paperwork in its distribution. Accurate, complete delivery packets showing the most efficient routes are automatically generated for its drivers, and as a result, trucks leave the docks an average of one hour earlier. Not only has this organization saved time and reduced costs, but it also has improved customer satisfaction by fulfilling customers' orders faster and more accurately.

Key Functionality

Post-Processing features include:

- Sheet layout: Supports folding marks, form overlays, sheet borders and rotating partitions
- OMR, barcodes and labels: Automatically applies OMR codes, barcode information and labels
- Sorting and staging: Now documents produced at different locations and times can be collected and scheduled for printing at specific times
- Bundling and enveloping: Automates the process of putting more than one document into one envelope
- Statistics and reporting: Detailed reports track the number of pages, documents and envelopes generated

For more information on how StreamServe's Post Processing can help you improve your control over your document-production and printing processes, please contact your local sales representative or visit www.streamserve.com



 **StreamServe™**
Bringing Documents to Life

The Americas
Headquarters
Tel: +1 781 863 1510
www.streamserve.com

ASIA-PACIFIC
Tel: +65 6238 3142
streamserve.com.sg

BENELUX
Tel: +31 (0)10 711 5100
www.streamserve.nl

FRANCE
Tel: +33(0)1 55 27 36 00
www.streamserve.fr

GERMANY
Tel: +49 511 16990 0
www.streamserve.de

SWEDEN
Tel: +46 (0)8 686 85 00
www.streamserve.se

THE UNITED KINGDOM
Tel: +44 (0) 207 842 1800
www.streamserve.co.uk